

# HENRI MAILLARDET

## FRANCISC CHIUARIU



**Francisc Chiuariu** (born 1966, Sibiu, RO) is one of the most significant contemporary Romanian painters who emerged after the fall of the Communist regime. A prolific artist and gifted former professor at the Bucharest Art University in his mid-20s, over the last 30 years he focused exclusively on painting. Chiuariu is an avid and fearless explorer of diverse forms of visual expression who has developed a unique creative identity, distinctive in its mixture of traditional media and unconventional materials, techniques or surfaces. Spanning three decades, Chiuariu's artistic practice produced a multi-layered combination of photorealism and neo-expressionism, with his recent series *Vortex* moving firmly into ample abstract territories, at times reminding of Richter. He works in oil and acrylic with typographic ink, on canvas or translucent polymer sheets, with light-boxes and occasionally video as well. His recurrent themes involve the dissolving human presence in urban landscapes, the fleeting visual apparition of the powerful underlying network geometry which sustains our emotional interaction with fellow humans, history and the spiritual divine. As work in progress, the *Vortex* series has resulted in several outstanding large-scale canvases, examining famous urban squares resonant with personal and historic(al) memory. Following important local and international exhibitions, his works were included in the MNAC Romanian Contemporary Art Museum as well as in private collections in Romania, France, Russia, Switzerland, Israel, Canada, Austria, United States and South Africa.

He lives and works in Bucharest, Romania.

### Education

1993, B.A., National University of Arts, Painting Department, Bucharest, RO

1993 – 2000, Teaching at the National University of Arts, Painting Department, Bucharest, RO

### Solo Exhibitions

2019 - "Signal", Francisc Chiuariu Foundation, Bucharest, RO

2018 - "Eye of the Storm", AnnArt Gallery, Bucharest, RO

2017 - "View from Above", FivePlus Gallery, Vienna, AT

2016 - "View From Above", AnnArt Gallery, Bucharest, RO

2013 - "The Circle Theory", AnnArt Gallery, Bucharest, RO

2012 - "Shadows", AnnArt Gallery, Bucharest, RO

2012 - "Outdoor", Mogoșoaia Cultural Center, Bucharest, RO

2012 - "Outdoor", The National Museum of Contemporary Art, Bucharest, RO

2010 - "Networks", Atelier 030202, Bucharest, RO

2007 - "Obsession", Quasar Gallery, Bucharest, RO

2002 - Art Jazz Club, Bucharest, RO

# HENRI MAILLARDET

2001 - Hanul cu Tei Gallery, Bucharest, RO  
2001 - Căminul Artei Gallery, Bucharest, RO  
1998 - Hungarian Cultural Center, Bucharest, RO  
1993 - The New Gallery, Bucharest, RO  
1992 - The National Museum of Art, Roman, RO

## International Projects

2017 - "View from Above", Art Viena, Leopold Museum, Vienna, AT  
2013 - "End of Empires", Corke Gallery, Liverpool, UK  
2012 - "Eastern European Identities - Hungarian and Romanian Contemporary Art", Várfok Gallery, Budapest, HU  
2012 - "Colouring the Grey - State of Body", Independents Liverpool Biennial, UK  
2012 - "Romania in Paris", American Center for the Arts, Dorothy's Gallery, Paris, FR  
2011 - "Colouring the Grey - State of Body", The Artists' House, Tel Aviv, IL  
2011 - "Post Umanism", V-Art Gallery, Moscow, RU  
2011 - "Colouring the Grey - State of Body", Special Projects section, The 4th Edition of Moscow Contemporary Art Biennale, Artplay Design Centre, Moscow, RU

Artworks in museum collections (National Museum of Contemporary Art, Bucharest, RO) and private collections in Romania, France, Russia, Switzerland, Israel, Canada, Austria and South Africa.



# HENRI MAILLARDET



**FRANCISC CHIUARIU**

**Nihil Sine Deo (San Pietro, the Vortex Series)**

2017 – 2018

Oil on canvas, 200 x 300 cm

Signed in black ink on the back, on the top/right side, stamped with the Francisc Chiuriu Foundation Stamp

This ample, powerful work is the first in the *Vortex* series; it holds the alluring tension between the clarity statement of its title and the hazy, tumultuous body of the work itself. A mysterious energy painted in abstract mode is pushing past the taut wire circular structure of the square; its blood-red lines cut through the flesh, leaving scars with each and every thrust upwards into the transcendent heights. A reflective visitor of this famous space, situated both *in* and *outside* Rome, the artist suggests that this can be our ground-zero, affording us both the terror of losing the solid ground from under our feet and the structure to hold on to and grow into complete beings.

# HENRI MAILLARDET



## FRANCISC CHIUARIU

### Day of the Dragon (Tiananmen, the Vortex Series)

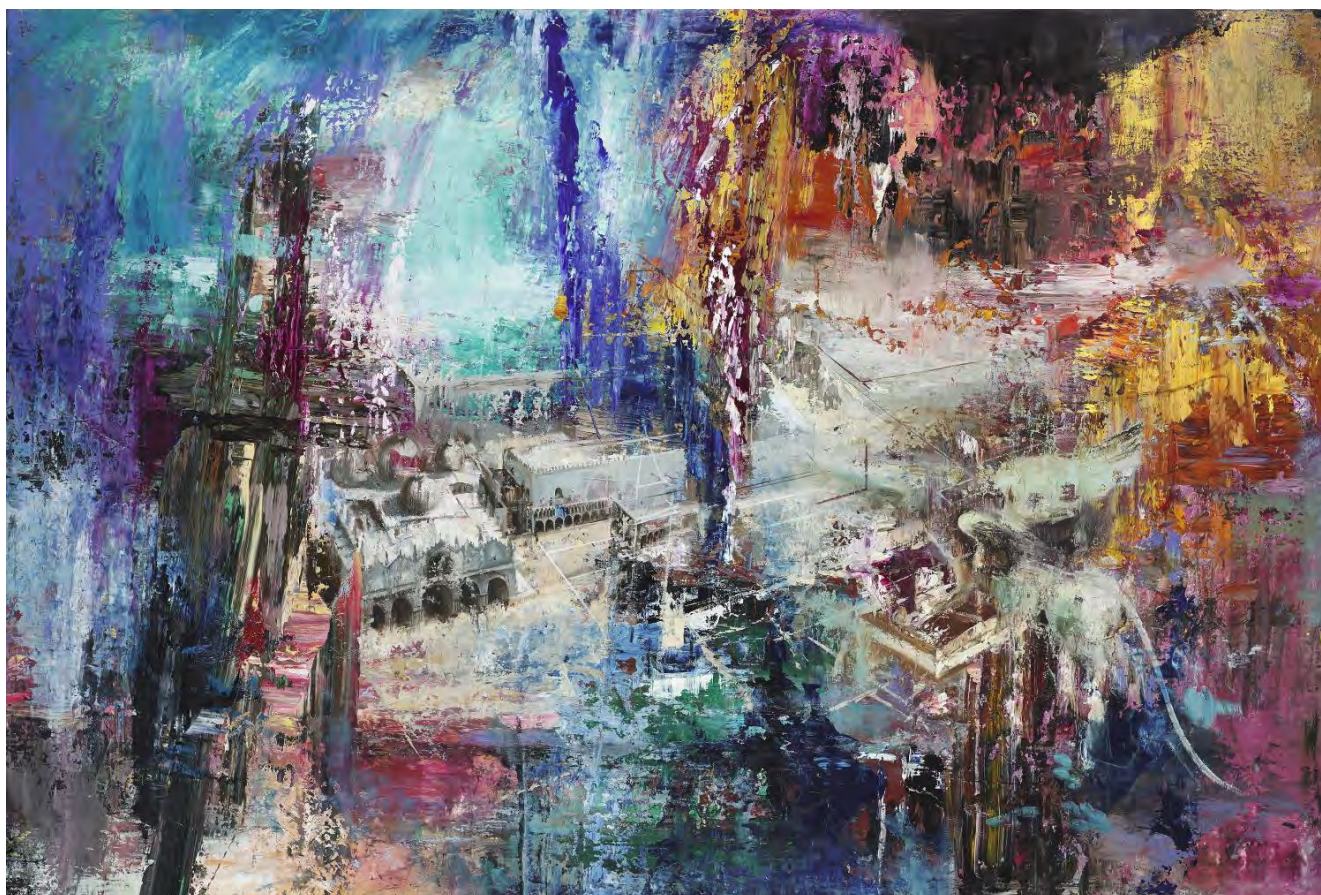
2017 – 2019

Oil on canvas, 200 x 335 cm

Signed in black ink on the back, on the top/right side, stamped with the Francisc Chiuariu Foundation Stamp

The most recent piece in the *Vortex* series, this work nearly drowned the artist's studio with its unrelentless drip and flow of red magma during the many months of its development. Applied in massive impasto, the paint produces three distinct bands of energy, in gray, white and red; they bring to mind an ever-changing sequence of the *bagua*, the Chinese trigrams which constitute the universe. The energy is wildly loose and ominous here though, devoid of the coherent structure of the fundamental elements. The Gate of Heavenly Peace has been broken by the unlikely dragon, with both Heaven and Earth crushed by Man's onslaught on history and personal freedom.

# HENRI MAILLARDET



## FRANCISC CHIUARIU

### Pray for Tomorrow (San Marco, the Vortex Series)

2017 – 2018

Oil on canvas, 135 x 200 cm

Signed in black ink on the back, on the top/right side, stamped with the Francisc Chiuariu Foundation Stamp

A favorite place of the artist, the San Marco square holds solid ground on the brink of the fluid and uncertain waters surrounding the city. The recent *aqua alta* which has overwhelmed Venice intensifies the experience of this extraordinary painting. The symbols of hegemony – political, commercial and cultural – emerge from the many-layered paint which resembles the ebb and tide, in an unsettling understanding of life/history's relentless flow of both limpid and dark meaning.

# HENRI MAILLARDET



**FRANCISC CHIUARIU**

**Nihil Sine Deo (San Pietro, the Vortex Series)**

2017 – 2018

Oil on canvas, 200 x 300 cm

Signed in black ink on the back, on the top/right side, stamped with the Francisc Chiuariu Foundation Stamp

This ample, powerful work is the first in the *Vortex* series; it holds the alluring tension between the clarity statement of its title and the hazy, tumultuous body of the work itself. A mysterious energy painted in abstract mode is pushing past the taut wire circular structure of the square; its blood-red lines cut through the flesh, leaving scars with each and every thrust upwards into the transcendent heights. A reflective visitor of this famous space, situated both *in* and *outside* Rome, the artist suggests that this can be our ground-zero, affording us both the terror of losing the solid ground from under our feet and the structure to hold on to and grow into complete beings.

# HENRI MAILLARDET



## FRANCISC CHIUARIU

### Day of the Dragon (Tiananmen, the Vortex Series)

2017 – 2019

Oil on canvas, 200 x 335 cm

Signed in black ink on the back, on the top/right side, stamped with the Francisc Chiuariu Foundation Stamp

The most recent piece in the *Vortex* series, this work nearly drowned the artist's studio with its unrelentless drip and flow of red magma during the many months of its development. Applied in massive impasto, the paint produces three distinct bands of energy, in gray, white and red; they bring to mind an ever-changing sequence of the *bagua*, the Chinese trigrams which constitute the universe. The energy is wildly loose and ominous here though, devoid of the coherent structure of the fundamental elements. The Gate of Heavenly Peace has been broken by the unlikely dragon, with both Heaven and Earth crushed by Man's onslaught on history and personal freedom.

# HENRI MAILLARDET



## FRANCISC CHIUARIU

### **Lenin's Dream (Red Square, the Vortex Series)**

2017 – 2018

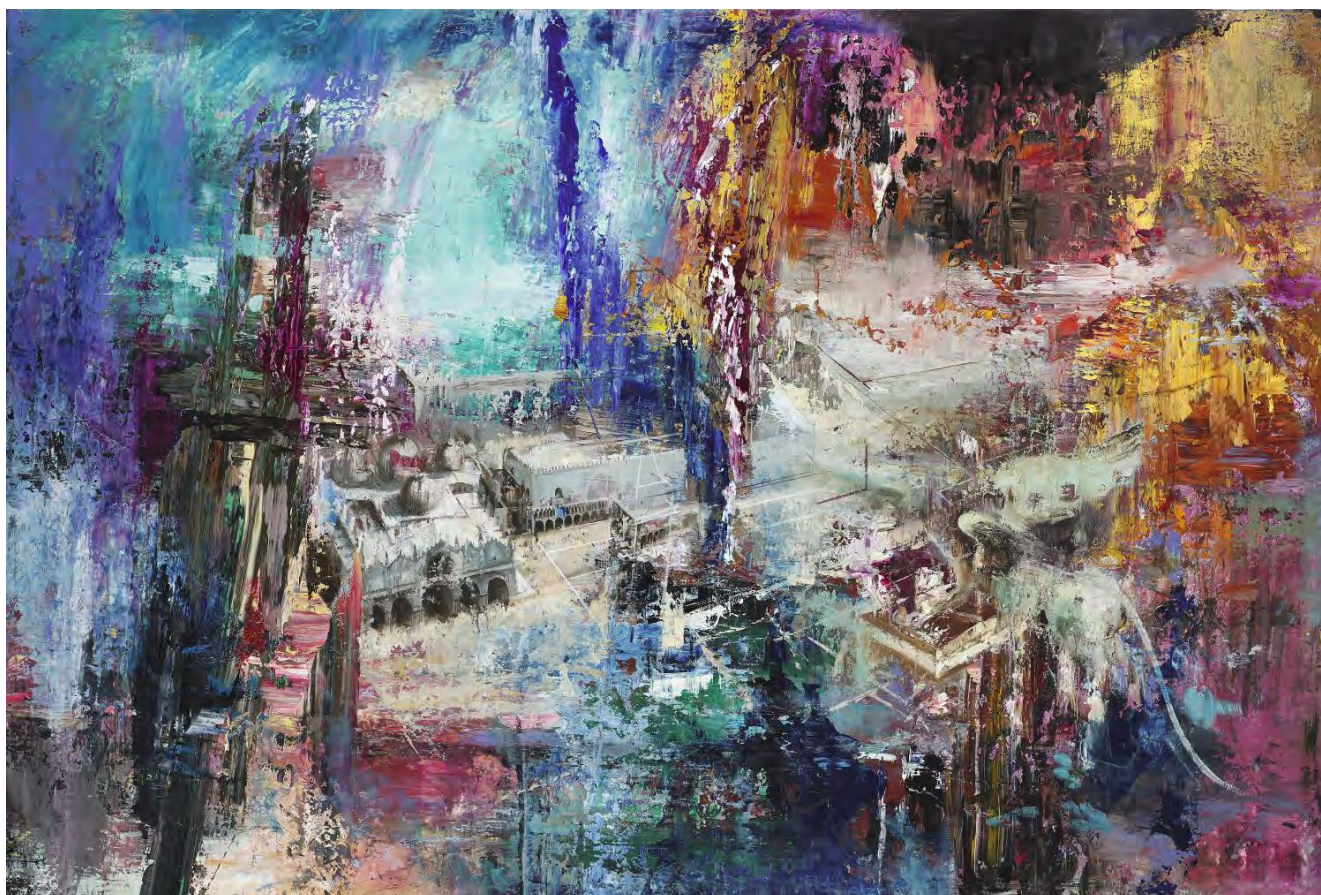
Oil on canvas, 140 x 220 cm

Signed in black ink on the back, on the top/right side, stamped with the Francisc Chiuariu Foundation Stamp

No stranger to the devastating impact of Soviet-inspired Communism in his own country, Chiuariu produces an astonishing abstract rendition of the Red Square in Moscow. The chromatic structure alone tells the story and draws the viewer perilously close into the depths of a harrowing history of death and decay. The dark axis of the Kremlin gives a fortress-like quality to the space, which is overflowing with crimson-red layers of impasto. A terrible beauty shimmers across the canvas, fascinating in its play with darkness and the ice-white promise of a cultured city still standing in the background, profiled against the hope (or sadness) of a sun-lit patch of blue sky.



# HENRI MAILLARDET



## FRANCISC CHIUARIU

### Pray for Tomorrow (San Marco, the Vortex Series)

2017 – 2018

Oil on canvas, 135 x 200 cm

Signed in black ink on the back, on the top/right side, stamped with the Francisc Chiuariu Foundation Stamp

A favorite place of the artist, the San Marco square holds solid ground on the brink of the fluid and uncertain waters surrounding the city. The recent *aqua alta* which has overwhelmed Venice intensifies the experience of this extraordinary painting. The symbols of hegemony – political, commercial and cultural – emerge from the many-layered paint which resembles the ebb and tide, in an unsettling understanding of life/history's relentless flow of both limpid and dark meaning.

# HENRI MAILLARDET



**FRANCISC CHIUARIU**

**Morning Glory (Times Square, the Vortex Series)**

2017 – 2018

Oil on canvas, 155 x 206 cm

Signed in black ink on the back, on the top/right side, stamped with the Francisc Chiuariu Foundation Stamp

Explosive light and deep trepidation dominate the viewer's first visual contact with this work – made all the more poignant as the artist has never actually seen the square: he associates it with one of his own personal motifs – *the abolition of sleep*, as a form of both freedom and anguish inherent to our human condition. The optimism of the yellow *morning glory* flower referenced in the title is an exhilarating promise of life triumphant over the dark, steep geometries of our cities and our personal inner worlds.

# HENRI MAILLARDET



**FRANCISC CHIUARIU**

**Morning Glory (Times Square, the Vortex Series)**

2017 – 2018

Oil on canvas, 155 x 206 cm

Signed in black ink on the back, on the top/right side, stamped with the Francisc Chiuariu Foundation Stamp

Explosive light and deep trepidation dominate the viewer's first visual contact with this work – made all the more poignant as the artist has never actually seen the square: he associates it with one of his own personal motifs – *the abolition of sleep*, as a form of both freedom and anguish inherent to our human condition. The optimism of the yellow *morning glory* flower referenced in the title is an exhilarating promise of life triumphant over the dark, steep geometries of our cities and our personal inner worlds.

# HENRI MAILLARDET



## FRANCISC CHIUARIU

### **Lenin's Dream (Red Square, the Vortex Series)**

2017 – 2018

Oil on canvas, 140 x 220 cm

Signed in black ink on the back, on the top/right side, stamped with the Francisc Chiuariu Foundation Stamp

No stranger to the devastating impact of Soviet-inspired Communism in his own country, Chiuariu produces an astonishing abstract rendition of the Red Square in Moscow. The chromatic structure alone tells the story and draws the viewer perilously close into the depths of a harrowing history of death and decay. The dark axis of the Kremlin gives a fortress-like quality to the space, which is overflowing with crimson-red layers of impasto. A terrible beauty shimmers across the canvas, fascinating in its play with darkness and the ice-white promise of a cultured city still standing in the background, profiled against the hope (or sadness) of a sun-lit patch of blue sky.

# HENRI MAILLARDET

## The Return to Exclusivity: Henri Maillardet

**HENRI MAILLARDET** is an exclusivist watches & jewellery brand, a unique combination between the classical value of gems, technology and the flamboyant self expression of an artistic ego. Henri Maillardet brand offers not mere objects, but undying pieces of art that transcend time through inherited value and unicity of expression.

Under its slogan "**Return to Exclusivity**", the very essence of the Henri Maillardet creations can be defined through their inspiration from art.

Henri Maillardet (1745-1830, born Jean Henri Nicholas Maillardet, in a village close to Neuchatel) was a Swiss vanguard mechanic and artist of the 18th century who worked in London producing clocks and other mechanisms. He created several singing birds, automated animals (the caterpillar, the frog) or the automated writer - The Juvenile Artist. Around 1800 Henri Maillardet built the extraordinary Automaton which has the largest "memory" of any such machine ever constructed—four drawings and three poems (two in French and one in English).

Automata, such as Maillardet's Automaton, demonstrates mankind's efforts to imitate life by mechanical means—and are fascinating examples of the intersection of art and science, beauty and material, invisible and touchable magnificence.

**HENRI MAILLARDET Art Society**, the art division of Henri Maillardet, has recently opened an Art Concept Space in Zurich, on the prestigious Bahnhofstrasse 43 / St. Peterstrasse 16. Its purpose is to support talented artists, allowing them to grow by providing a top platform to present their art, as well as to facilitate the dissemination of art to the general public by providing additional solutions to the customary purchase of art: renting, leasing or long term financing.

**HENRI MAILLARDET Art Society** combines the expertise in exclusive jewellery and watches with the passion for art and brings a new "Art meets Luxury" concept on the market. It promotes modern and contemporary artists in a beautiful environment, while contributing to the artistic and intellectual lifestyle.

Successful people in today's world have a great interest in art and in one of a kind objects (like jewellery and watches). They seek power, recognition and respect. They want a place where they can meet other people alike. They like an environment to which to identify themselves, a place where to drink a perfect coffee or a glass of the Henri Maillardet exquisite champagne, free of any pressure. Just enjoy and relax...

Our **mission** is to earn the trust of a refined audience by curating, assisting and guiding their choices in the fascinating world of Art, Jewellery and Watches.

Our **vision** is to become the reference point of the world market of those who are seeking the best in Art, Jewellery and Watches.

Our **values** are uniqueness, exclusivity, sincerity, power, emotion and permanence.

**Welcome to the Henri Maillardet Art Society!**

# HENRI MAILLARDET

RETURN TO EXCLUSIVITY

