

# SMART SHIP GALLERY

SMART SHIP GALLERY  
3F 6-6-1, Daita Setagaya-ku, Tokyo , JAPAN  
TEL: +81-(0)3-5465-1377  
e-mail : info@smart-ship.co.jp  
<http://www.smart-ship.co.jp>

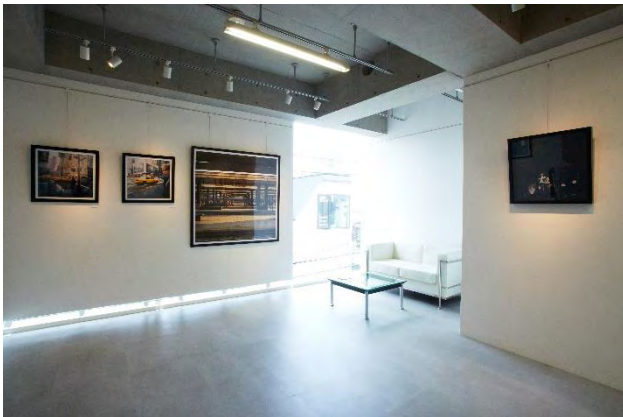
# SMART SHIP GALLERY

In 2011 , SMART SHIP GALLERY was founded in Shimokitazawa, Tokyo.

We consider Smart to mean promotion of creative thought.

SMART SHIP GALLERY introduces the works of artists from both at home and abroad under the basic concept of conveying the dignity of identity that people of today must establish as individuals through contemporary art.

SMART SHIP serves as a boat that links Japan and the other countries of the world through trade, art, and life. Smart Ship was founded as an art trade ship for the purpose of promoting cultural/social creativity with a living intellect and sensitivities.



## EXHIBITION

- 2019 KAO KAO PANDA & Soda Ko Exhibition
- 2018 Yu Uchida Exhibition - ENDLESS SUMMER –  
Airside EXHIBITION -TORI- By Henki Leung
- 2017 Nobby ART EXHIBITION  
KAO KAO PANDA & Soda Ko EXHIBITION
- 2016 KUMIKO TAMURA EXHIBITION  
KENJIRO KAWAHARA EXHIBITION –Birdwatching–
- 2015 KAORU KONAGAI ART EXHIBITION ~BLUE CAKE~  
SAYUMI FUKUSHIMA EXHIBITION Spiegelbild der Erinnerung  
Hibiki Kobayashi EXHIBITION tribe
- 2014 Airside Nippon Zoo  
Herbie Yamaguchi EXHIBITION  
GOMA ART EXHIBITION
- 2013 JUNICHI ART EXHIBITION —LOVES—  
MACOPURI EXHIBITION
- 2012 Hello Nippon, We are Airside Nippon ! Airside EXHIBITION  
Yukihito Masuura EXHIBITION

## ART FAIR

- 2019 Affordable Art Fair Milan 2019  
Infinity Japan 2019 Contemporary Art Show
- 2018 ART EXPO MALAYSIA PLUS 2018  
Infinity Japan 2018 Contemporary Art Show  
ART INTERNATIONAL ZURICH
- 2017 Asia Contemporary Art Show HONG KONG  
ART INTERNATIONAL ZURICH
- 2016 Affordable Art Fair Hamburg  
Asia Contemporary Art Show HONG KONG FALL  
AXIS Photo Marche
- 2015 ART INTERNATIONAL ZURICH  
ART OSAKA  
ART AXIS Photo Marche
- 2014 ART INTERNATIONAL ZURICH  
BERLINER LISTE
- 2013 SCOPE BASEL
- 2012 Affordable Art Fair Seattle
- 2011 ART INTERNATIONAL ZURICH

# KATSUYO MATSUMARU

Born in Nara Prefecture

- 2019 Affordable Art Fair Milan
- 2018 ART INTERNATIONAL ZURICH
- 2017 Asia Contemporary Art Show HONG KONG  
ART INTERNATIONAL ZURICH
- 2016 Asia Contemporary Art Show HONG KONG  
ART INTERNATIONAL ZURICH
- 2015 Shadow box art exhibition in Japan 2015  
ART INTERNATIONAL ZURICH
- 2014 Zero Art exhibited at hggrp GALLERY NEW YORK  
PECHU's work "Flowers and Insects" at Gallery Amrita  
Kobe Art Marche  
BERLINER LISTE Presented [R] (painting by PECHU)
- 2013 Chosen by the 40th Nishou Exhibition  
Presented [A] (painting by PECHU) [OKURIMONO] (painting by PECHU)  
Submitted PECHU ~10-year history exhibition  
Shadow box art exhibition in Japan 2013  
Shadow Box 3-Artist Exhibition at R & P gallery  
Shadow Box authorized acquisition of Stained Glass Art  
Association Instructor  
Presented [Eternity] (painting by PECHU)  
Shadow box art exhibition in Japan 2012
- 2011 Shadow Box authorized acquisition of Instructor Hanamizuki  
Produced works in collaboration with Artist PECHU
- 2005 Founding of the Shadow Box



MM series NO.5  
2019 / art paper, silicon bond  
25.5×20.3cm



RYUUKIN (Design:pechu)  
2017 / art paper, silicon bond  
26.0×44.0cm



HIBUNA (Design:pechu) Black  
2018 / art paper, silicon bond  
32.5×41.5cm

**SMART SHIP GALLERY**

3F 6-6-1, Daita Setagaya-ku, Tokyo, JAPAN / TEL: +81-(0)3-5465-1377  
e-mail : info@smart-ship.co.jp <http://www.smart-ship.co.jp>

# NORIKO TAKAOKA

Photo Artist.  
Born in Osaka.

From 1985, began a series of volunteer activities for cultural exchange in order to get knowledge about culture and lives all over the world. Through these experiences and years of photography in Japan and overseas, a new concept emerged. From 2007, started to create the series “Life” using flowers as the motif, to seek meaning in “Daily life, Life in general and One’s life time” a project still being worked on energetically.

<http://www.norikotakaoka.com>



~Spectacle of light~ C-01  
2019 / Photographie  
42.0 × 29.7cm



~Spectacle of light~ L-03  
2019 / Photographie  
42.0 × 29.7cm



~Spectacle of light~ window  
2019 / Photographie  
56.0 × 45.7cm

## My Window

I have a sunny bow window in my dining room. It acts as a photo space. The sun shining through the window is constantly changing, so I see many kinds of expression. I adorned it with a flower in 2007 : this was the beginning. I continued to take photos of dying flowers with the theme of “life”. Many photos were born there and have been displayed at many exhibitions in Japan and overseas.

Now the window is like a stage. I put a vase with a flower or empty bottles or mementos by the window, and the bright and vacant sunlight makes a story of them. The light through the curtain of the window is calm, provides warm brightness and shines. How beautiful it is ! I am fascinated by the beauty of changeable scenes. I started to take photos of this spectacle of light.

The sunlight makes a series of light and shadows by the pleat of the curtain. The shadow of the window frame falling on the curtain becomes curvaceous. The passage of time changes the colors of photos. All are created by the sun shining through the window.

I think such a spectacle of light captured by the camera impresses us because “light” is indispensable for a living being.

Noriko Takaoka

**SMART SHIP GALLERY**

3F 6-6-1, Daita Setagaya-ku, Tokyo, JAPAN / TEL: +81-(0)3-5465-1377  
e-mail: info@smart-ship.co.jp <http://www.smart-ship.co.jp>

# YOSHINORI NOZAKI

Born in 1943

From Kyoto

A Member of Kofukai

1973 graduated from Central Art School

Exhibition

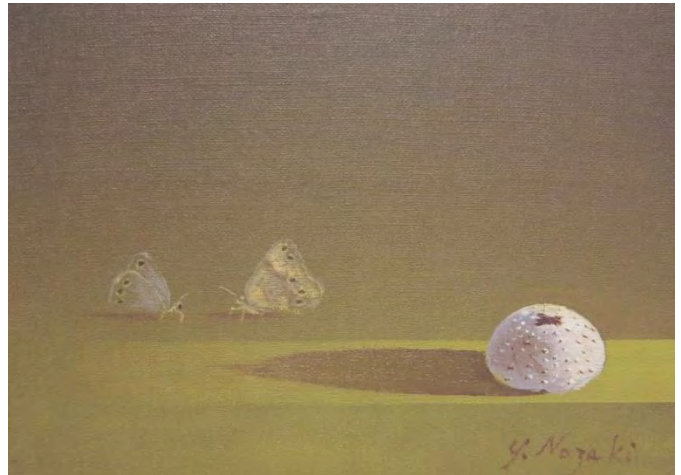
KIAF (Korea International Art Fair) 2007,2013,2014

ART TAIPEI 2009,2010

ART MONACO 2013

Affordable Art Fair Seattle 2013

Asia Contemporary Art Show HONG KONG



Late summer  
2019/ Oil on canvas  
15.8 × 22.7cm



A Boy in spring  
2019 / Oil on canvas  
60.6 × 72.7cm



Summer is Going  
2018/ Oil on canvas  
60.6 × 72.7cm

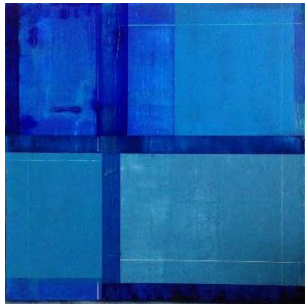
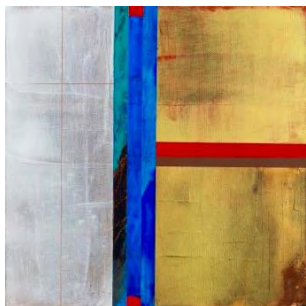
**SMART SHIP GALLERY**

3F 6-6-1, Daita Setagaya-ku, Tokyo, JAPAN / TEL: +81-(0)3-5465-1377  
e-mail : info@smart-ship.co.jp <http://www.smart-ship.co.jp>

Abstract

# SMART SHIP GALLERY SELECTION

LINMAY KOMINE



MINEKO TAKAHASHI



KAZUHIKO MIYAMOTO



SMART SHIP GALLERY

# TATSUHIKO SAKAMOTO

- 1953 Born in Ehime Japan  
1979 Master's degree at Tama Art University  
1999 Grand Prix Paris International Salon  
2000 Salon de Mai  
2001 Grand Prix Brisbane Australia competition  
2003 Grand Prix Rome Italy competition  
2011 Salon d'Automne  
2012 Taegu Art Fair  
2013 Santa Fe Art Fair Semi Grand Prix in Spain competition  
2014 Santa Fe Art Fair Malaysia Art Expo  
2015 Pusan Art Show  
2016 Art Show HONG KONG ART INTERNATIONAL ZURICH  
2017 Art Show HONG KONG ART INTERNATIONAL ZURICH  
2018 Art infinity TAIWAN



Mukuge Petals 02  
2017 / oil on canvas  
19.8 × 41.0cm



Plant notation 02  
2016 / oil on canvas  
25.8 × 22.2cm



Mukuge Petals 05  
2017 / oil on canvas  
49.0 × 87.5cm

**SMART SHIP GALLERY**

3F 6-6-1, Daita Setagaya-ku, Tokyo, JAPAN TEL: +81-(0)3-5465-1377  
e-mail: info@smart-ship.co.jp <http://www.smart-ship.co.jp>



# Japanese style painting 「NIHON-GA」

「Nihon-ga」 are typically executed on washi (Japanese paper) or eginu (silk), using brushes. The paintings can be either monochrome or polychrome. If monochrome, typically sumi (Chinese ink) made from soot mixed with a glue from fishbone or animal hide is used. If polychrome, the pigments are derived from natural ingredients: minerals, shells, corals, and even semi-precious stones like malachite, azurite and cinnabar. The raw materials are powdered into 16 gradations from fine to sandy grain textures. A hide glue solution, called nikawa, is used as a binder for these powdered pigments. In both cases, water is used; hence nihon\_ga is actually a water-based medium.

HIROKI YOSHIDA



CHIYOKO TAKAKI



TAEKO TSUNODA



KATSUYA UEDA



# HIROKI YOSHIDA

Hiroki Yoshida was graduated from Tokyo University of the Arts.  
Ever since when he was a student, he was deeply attracted by gold leaf.  
After graduation, he continued to explore the technique of gold leaf expression and presented numerous innovative and modern works of his own.

In addition, gold leaf has different names according to its purity.  
Normal Japanese drawings tend to use No. 4 color which is of less purity.  
However Yoshida's choice of gold leaf is No. 1, with a purity of about 98%.  
Due to the minute amount of impurities, the drawings can be kept of a long period of time without discoloration and deterioration.

1973 Born in Wakayama, Japan  
1997 Tokyo University of the Arts, Faculty of Fine Arts, B.A in Japanese Painting  
2000 Tokyo University of the Arts, Faculty of Fine Arts, M.A in Art and Education  
2003 Tokyo University of the Arts, Faculty of Fine Arts, PhD in Art and Education

## Selected Solo Exhibition

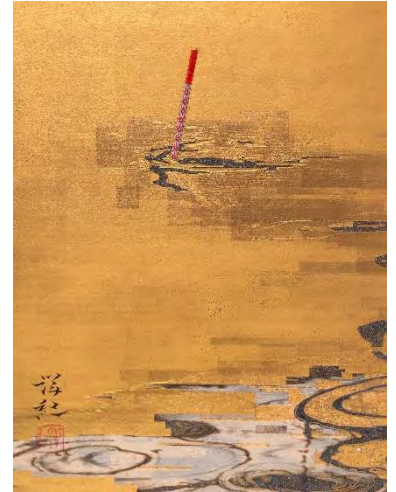
1997 Solo Exhibition (Wakayama Tokyu in Castle Gallery, Wakayama)  
2003 Solo Exhibition (Gallery Ishikawa, Tokyo)  
Solo Exhibition (Tokyo University of the Arts Exhibition Hall)  
2005 Solo Exhibition (Gallery Ishikawa, Tokyo)  
2007 Solo Exhibition at Tobi Art Fair (Tokyo Art Club)  
2009 Solo Exhibition (Gallery Ishikawa, Tokyo)  
Solo Exhibition at Tobi Art Fair (Tokyo Art Club)  
2011 Solo Exhibition at Tobi Art Fair (Tokyo Art Club)  
2014 Solo Exhibition (Gallery Ishikawa, Tokyo)  
2015 Solo Exhibition (BUSAN ART SHOW • Kim Bo Sung Art Center/Korea)  
2016 Solo Exhibition (U space gallery/Taipei)

## Selected Group Exhibition

2010 ArtAwardnext# 1 (Tokyo Art Club)  
Joint Exhibition of Hiroki Yoshida and Akihiro Fujimoto (Shizuoka)  
Group Exhibition Art expo 2010 (Malaysia)  
2011 GinzaGalleryArtFair2011 (Tokyo)  
2013 50th Anniversary Exhibition, Wakayama Prefecture Culture Award (Museum of Modern Art, Wakayama)  
2014 Bank Art Fair (Singapore)  
2015 Infinity Japan 2015 (Taiwan)  
2016 Infinity Japan 2016 (Taiwan)

## Award

2000 Salon De Printemps Award  
2001 Junior Chamber International Wakayama Culture and Arts Foundation Azalea Prize  
2003 Morinokai Award Special Prize  
2004 Kinokuni New Artist Award, exhibition at Wakayama Prefecture Culture Hall  
2006 Okuwa Culture Achievement Award



self-effacement  
2018 / Gold foil, Stone pigments on Linen paper  
32.5×24.5cm



BRILLIANCY  
2017 / Gold foil, Stone pigments on Linen paper  
41.0×28.0cm

SMART SHIP GALLERY

3F 6-6-1, Daita Setagaya-ku, Tokyo, JAPAN / TEL: +81-(0)3-5465-1377  
e-mail : info@smart-ship.co.jp http://www.smart-ship.co.jp

# KATSUYA UEDA

1944: Born in Kyoto.

1968: Graduated from the Tokyo University of the Art. Apprenticed himself to Tatsuo Takayama.

1970: Completed graduate school at the Tokyo University of the Arts.

1981: Entered the Modern Art Selections Exhibition held by the Agency for Cultural Affairs (1985).

Created works for overseas embassies under commission by the Ministry of Foreign Affairs.

1982: Awarded an Honorable Mention at the Tokyo Central Museum Japanese Paintings Grand Prize Exhibition.

1994: Participated in the Japanese Painting Exhibition at the festival to celebrate 100 years of support for Heian-Jingu.

2000: Appointed as professor in the Kyushu Sangyo University Faculty of Fine Arts Graduate School

2001: Appointed as regent for the Japan Fine Arts Exhibition. Appointed as a management committee member for the Japan Fine Arts Exhibition.

2002: Appointed as vice chief director for the Japanese-Style Painters' Association in Kyoto (~2006).

2003: Donated a Japanese-style painting for the Great 1100<sup>th</sup> Anniversary Festival at Dazaifu Tenmangu Shrine.

2005: Served as judge at the Kyoto Exhibition. Appointed as a managing committee member for the Kyoto Culture Foundation Exhibit Room (~2007).

2012: Created "Gion Festival" for the 100 Selections of the Heart of Kyoto Exhibition  
Stored in Kyoto Prefecture.

2015: Held exhibit commemorating his retirement accompanying mandatory retirement as a professor in the graduate school at Kyushu Sangyo University Faculty of Fine Arts (University Art Museum).  
Appointed as Honorary Professor.

2016: Held the "Bond between Master and Pupil: Tatsuo Takayama and Katsuya Ueda" Exhibition.  
(Narukawa Art Museum)

## Locations of Collection

Ministry of Foreign Affairs headquarters, overseas Japanese Embassies, Prime Minister's official residence exhibit, Kyoto Prefecture, National Museum of Modern Art Museum in Kyoto, Nara Prefecture Complex of Man'yo Culture, Fukuoka Art Museum, Narukawa Art Museum, Sato Sakura Museum, Randokaku Art Museum, Lake Yamanaka Takamura Art Museum, Nishibori Eizaburo Memorial Explorer Museum, Kyushu Sangyo University, National College of Technology, Suzuka College, Heian Jingu Shrine in Kyoto, special Tachibanadera Temple in Nara, Dazaifu Tenmangu Shrine, Gangyoji Temple (Shinshu sect, Otani school), Eisai Co., Ltd., Kyoto Chuo Shinkin Bank



Basket of flowers  
2016 /stone pigments on Linen paper  
22.0 × 15.0cm



Flower  
2018 /stone pigments on Linen paper  
72.7 × 60.6cm

## SMART SHIP GALLERY

3F 6-6-1, Daita Setagaya-ku, Tokyo, JAPAN / TEL: +81-(0)3-5465-1377

e-mail: info@smart-ship.co.jp <http://www.smart-ship.co.jp>

# TAEKO TSUNODA

Japan Artists federations member  
21 Art Association Board of Directors

1969 Graduated from Tama Art University  
1972 Shinseisaku Exhibition prize  
1990 Nitten Exhibition prize  
2006 21 Art Association Exhibition prize  
2008 21 Art Association Exhibition Gold Medal  
2010 Solo Exhibition (Tokyo/Ginza)  
2013 21 Art Association Exhibition Award  
2014 21 Art Association Exhibition Board of Directors Award  
Solo Exhibition (Tokyo/Ginza)

Art Fair

2014 BERLINER LISTE  
2016 Asia Contemporary Art Show HONG KONG  
2017 Asia Contemporary Art Show HONG KONG  
2019 Affordable Art Fair Milan



Beyond the difference  
2018 / India ink, mineral paint on Japanese paper  
22.0×29.5cm



ORINASU  
2018 / India ink, mineral paint on Japanese paper  
10.0×14.3cm



KIDOU I  
2019 / India ink, mineral paint on Japanese paper  
49.0×24.0cm



KIDOU II  
2019 / India ink, mineral paint on Japanese paper  
49.0×24.0cm

**SMART SHIP GALLERY**

3F 6-6-1, Daita Setagaya-ku, Tokyo, JAPAN / TEL: +81-(0)3-5465-1377

e-mail : [info@smart-ship.co.jp](mailto:info@smart-ship.co.jp) <http://www.smart-ship.co.jp>